

R-SCAN DCP

Manual, dry-coupled ultrasonic inspection system for ferrous and non-ferrous applications.

Quick start guide for linking Eddyfi PAUT Instruments to the R-SCAN DCP.

General

Before setting up your RSCAN and PAUT Instrument ensure the latest version of capture has been installed on the unit. Once installed follow instructions below for equipment setup. For further information on;

R-SCAN – Refer to Chapters 3 and 7 of Swift-Scorpion2-R-Scan user manual - [Click here](#).

CAPTURE – For guidance on the capture platform please contact support-m2m@eddyfi.com

System Overview



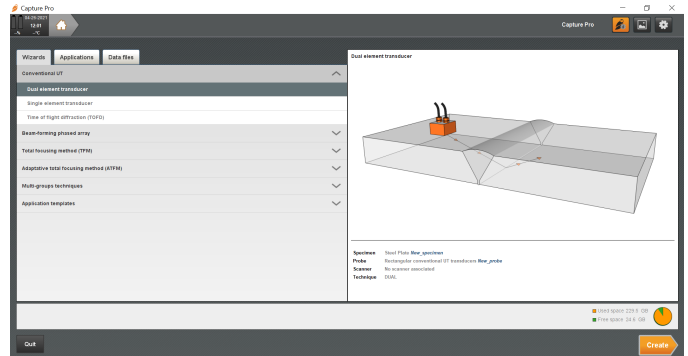
Probe & Instrument Setup

1. Plug adapter between PAUT Instrument and R-Scan umbilical cable (Insert only after Instrument powered).
2. Plug R-Scan umbilical cable into adapter cable and plug Lemo connectors to instrument.
3. Secure R-Scan Umbilical cable to instrument with supplied tie wraps.
4. Connect R-Scan umbilical to the socket at the back of the R-Scan.

Capture Setup

1. Using the *Wizards* tab, create a new setup:

- Conventional UT
- Dual element transducer
- Create

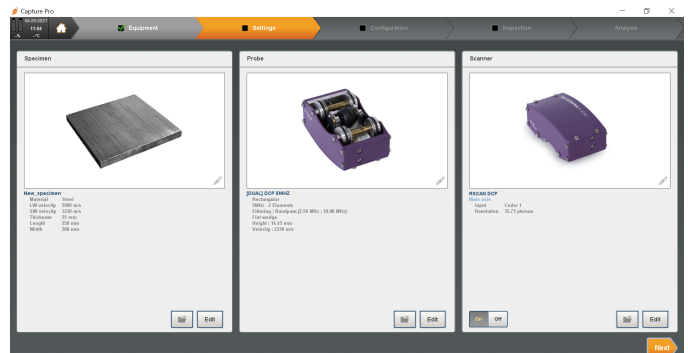


2. In *Probe* window;

- Click open folder and select *Silverwing DCP 2.5MHz / 5MHz*

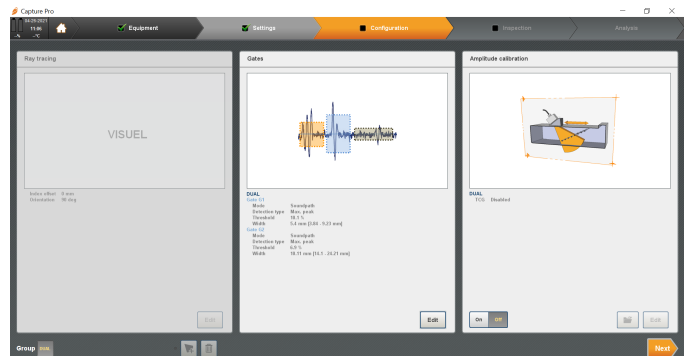
In *Scanner* window;

- Click open folder and select *RSCAN DCP*
- Click Next



3. In *Gates* window;

- Set required amount of gates and individual parameters (Minimum 1)
- Apply TCG is required
- Click Next

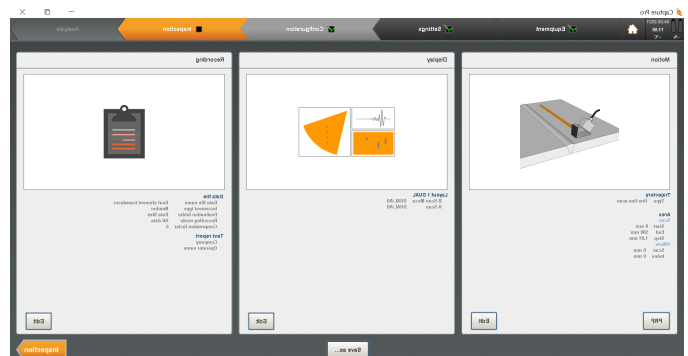


4. In *Motion* window;

- Set scan area

In *Display* window;

- Set 2 screen display
 - A-Scan (All)
 - B-Scan Meca
- Click *Inspection*



5. In *Inspection* window; Minor delay line adjustment for probe calibration can be made by pressing the menu button in the bottom left of this screen

- Select offsets
 - Time delay in bottom right next to OK button
- Once completed, press ok and then the Play button for data acquisition.

